

Models: 4 / 8 CH

Wireless NVR kit Quick installation guide

► Hardware description

1 Statement

- Sincerely thanks for purchasing our products, pls contact us if any problem or requirement. This manual is for network video recorder.
- This user manual may contain incorrect place in technology, place not matching with product function or operation, or printing mistake.
- We will update our user manual according to our updating in product, and will periodically improve or updating the product and programming.
- The updating content will add in the new user manual, we won't inform.
- If the product's description in user manual is inconsistent with the real products, pls based on the real products.

2 Safety cautions

1. Pls don't put a container with liquid on DVR (like Vase) .
2. DVR should put at a ventilation place, and prevent clogged the ventilation hole.
3. Check the power voltage, in case of damage by wrong voltage.
4. DVR should work at the technical standard range of temperature and humidity.
5. Place DVR on level, pls avoid installing at a sharp pounding place.
6. Moisture dust in PCB will cause short circuit, for long-term use of the DVR, you can periodically remove dust in PCB by brush.
7. It will cause burst if replace battery in wrong way, we don't suggest user to replace by himself; if need replace, only use the same type or equivalent type battery, pls don't try to open or maintain the battery.
8. DVR installation need according to specification, you can take the national or local standard as reference.

01

Wireless NVR kit Quick installation guide

10 NVR, IPC parameter list

NVR parameter			
Operating System	Embedded linux OS		
AV(audio/video)input	Network Video	4CH	8CH
AV (audio/video) output	HDMI input	1ch, resolution: 1024x768, 1366x768, 1440x900, 1920x1080p	
	VGA output	1ch, resolution: 1024x768, 1366x768, 1440x900, 1920x1080p	
AV CODEC	Video Resolution	720P/960P/1080P	
Specification	Synch-playback	4CH	8CH
Video Control	Video/Capture mode	Manual、Time、Motion、Alarm	
	Playback mode	Realtime、Routine、Event	
	Backup	USB backup	
HDD	Type	1*SATA interface	
	Max Capacity	4 TB at most for each	
External Interface	Network Interface	1/4 adaptable RJ45 10M/100M, 2 WIFI interface	
	USB Interface	1/2 USB 2.0	
Network Control	Protocol	UPnP (play&plug)、SMTP (email service)、PPPoE (dial-up)、DHCP (Automatically Obtain an Ip address),etc...	
	Power	DC 12V 2A	
Others	Consumption(excluding HDD)	≤5W	
	Working Temperature	-10℃—55℃	
	Working Humidity	10%—90%	
	Size	258x210x42mm	
	Weight(excluding HDD)	≤1Kg	

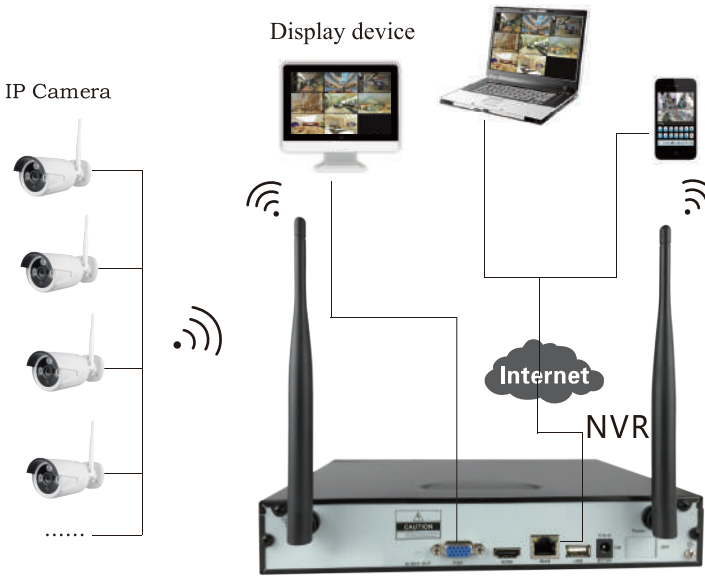
05

Wireless NVR kit Quick installation guide

3 Open-package inspection

After receive product, pls open giftbox, remove NVR and put it on suitable place, check accessories. If any damage or lack, kindly pls contact to the distributor.

4 Installation diagram

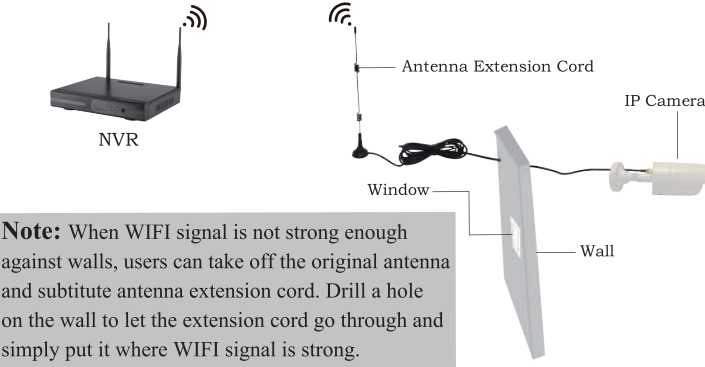


02

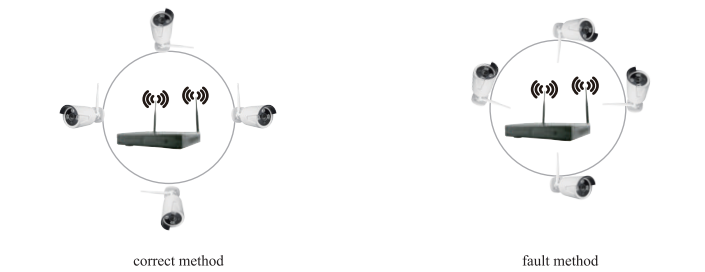
Wireless NVR kit Quick installation guide

Wireless NVR kit Quick installation guide

5 Installation Way of Antenna Extension Cord



6 Antenna location



03

Wireless NVR kit Quick installation guide

► Software operation

1 Add camera by matching code

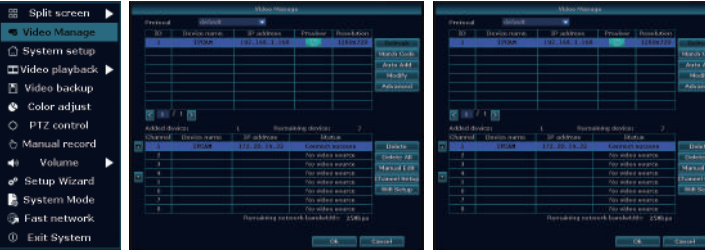
Steps: Right click the mouse on the main interface, and then click video management ,go into video management interface

Two ways for Wireless NVR to add IPC, “Code Add “and “Auto Add”.

Adding camera by matching code, the camera transmits video images through wireless and NVR,IP is 172.20.14.X ;

Auto adding the camera, the camera transmits video images through the cable and NVR ;

Note: The camera has been matched by factory, no need to add other cameras. If you need to match one code, Firstly, take one network cable and connect to any NVR lan port and power on the device to make sure there is still have any channel can add one camera.



2 Video playback

Step: Right click mouse in main menu →Video playback →choose channel NO. →choose record mode →in Search time,input beginning time and end time →click search,recording will Come out ,drag time bar →click playback to start.

Tips: Playback icon introduction: [Previous] playback 1 fram previous [Next] playback 1 frame next [Play] play [Pause] pause [Fast Forward] fast forward x2,x4,x8.

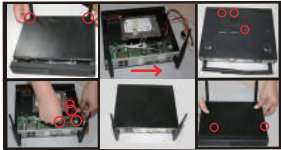
07

7 HD Install

Notice that the HDD had been used need supplier recommend, and need make sure already cut off the power

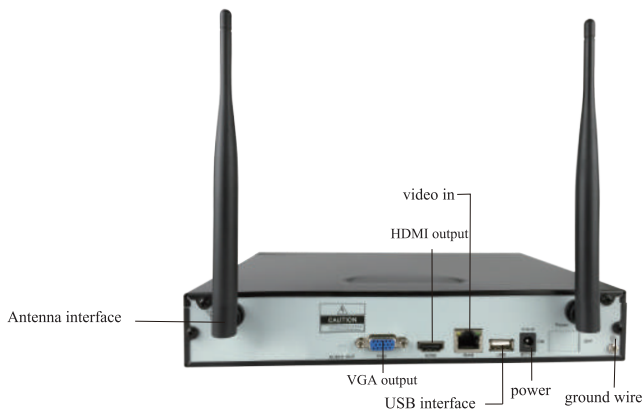
Install Steps:

1. Remove the screw of the dvr
2. Connect the HDD cable and power line
3. Assmble the screw, and fix the HDD in the bottom of NVR
4. Close the cover and fix it



For example,4Ch

8 Rear Panel Description

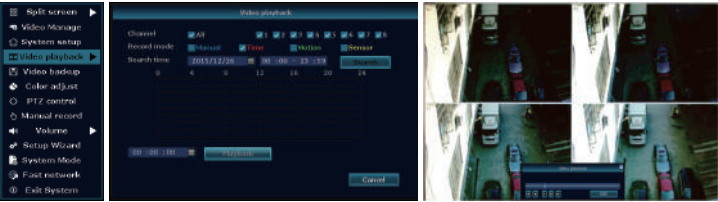


9 Turn on/off

Confirm that AC voltage accessible matches with DVR .Ensure that the DVR power outlet connect with a good middle ground grounding. After switching power, the device started, 【POWER】 light is on. Turn into system, if the panel status light flashing, it's normal conditions.

04

06



3 Video backup

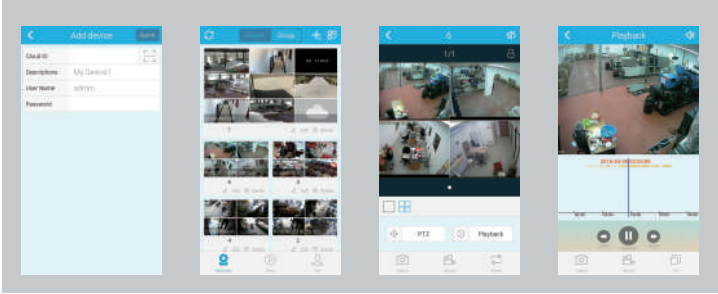
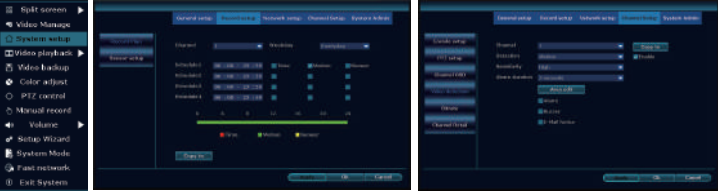
Step: Step: Right click mouse in main menu →Video backup →choose channel No.→choose record mode →in Search time ,input beginning time and end time →click serach,recording will come out →choose the video which need to backup →click video backup.

Tips: Support 32G U disk backup max ,recording will be packed every one hour.



4 Video detection

Step 1: Right click mouse in mian menu →System setup →Record setup →choose motion→choose all →click Copy to →click OK to save setting.
Step 2: Choose Video detection →set sensitivity as requirsd→choose motion→set Alarm,Bizzar or Email as required→click Copy to→click OK to save setting .



► Cascading Function Setup Manual

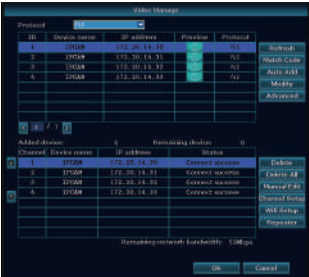
Cascading function: IP cameras can be repeater to transmit WIFI signal and offer wider range.

Note:

1. This function can’t strengthen WIFI signal, just extend the distance when cameras are installed at the right place.
2. The software version of wireless NVR is 2.5.0.4, camera 1.6.7. Otherwise both NVR and cameras should be upgraded.

1 Setup procedure:

Setup1: Right click on NVR’S GUI, left click “video management”---- then left click “repeater”.



5 Generate Esee ID

Precindition to generate Esee ID is that make sure video recorder is connected with network,and IP address is available Right click mouse in main menu →System setup →Network setup If user is familiar with LAN,then no need to choose DHCP which help to get IP address automa→tically. Manually input IP address and DNS address,video recorder will generate ID by network,once generate,it will appear in menu.



If user not familiar with LAN,or video recorder is in independent network,can choose DHCP to get availableIP address.
After video recorder get IP address ,it will generate Esee ID automatically.



6 Access in LAN

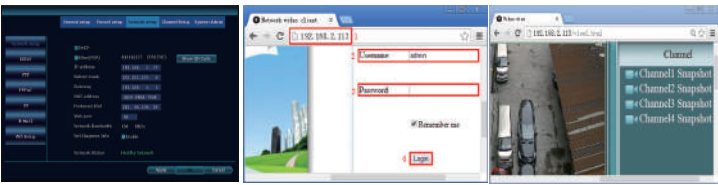
Step 1: Right click mouse in main menu →System setup →Network setup →check videorecorder IP address.
Step 2:Access by computer in same LAN ,input video recorder IP address and prot(If prot is 80, no need to input)in IE prwser or any other browser.Then it will access LAN log in webpage,input user name and password,click log in.
Step 3:Once access successfully,can get video.
Tips: Please make sure video recorder and computer in same network segement.

Setup2: Set up cascading. As picture shown below, click icon + besides channel 1, choose channel 2. This means that channel 1 camera is the repeater between NVR and channel 2. Then click “Apply” and “OK”.



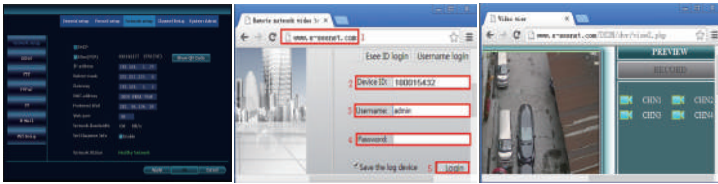
2 Delete the function:

Move the mouse to targeted channels, left click to delete, and then click “Apply” and “OK”.



7 Access in WAN

Step 1: Right click mouse in main menu→System setup→Network setup →check video recorder IP address.
Step 2: Open the IE browser,enter the **www.e-seenet.com** in the address bar. Then it will access log in webpage ,input ID,user name and password,click log in.
Step 3: Once access successfully,can get video recorder side upload and computer side download speed,each channel need above 20KB.



8 Mobile application download and installation

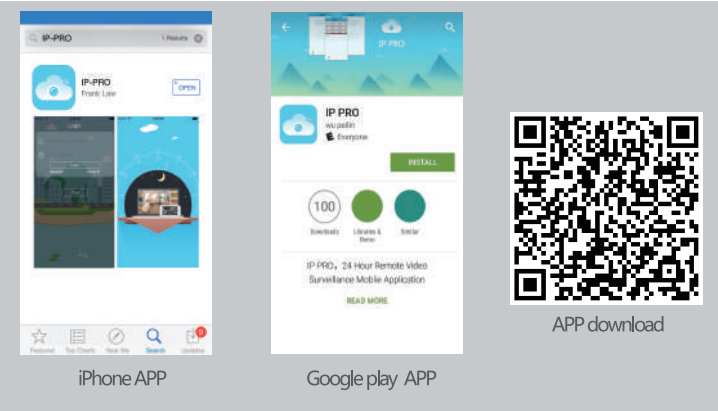
No. 1: Go to **http://www.dvr163.com/download/indexm.php?p=ippro** in mobile browser, enter download page, click install to download and install APP.
No.2: Please scan the QR code in manual to download APP.

Packing list

S/N	Item	Quantity
1	WIFI NVR	1pcs
2	Screw bag (4 screws for HDD)	1pcs
3	USB mouse	1pcs
4	1 meter network cable (for IPC code match)	1pcs
5	DC 12V2A power supply (for NVR)	1pcs
6	NVR user manual 、 Installation Instructor	1pcs
7	WIFI IP Camera	4/8 pcs
8	DC 12V / 1A power supply (for IPC)	4/8 pcs
9	Screw bag (for IPC)	4/8 pcs
10	Antenna Extension Cord	1/2 (4CH/8CH) PCS

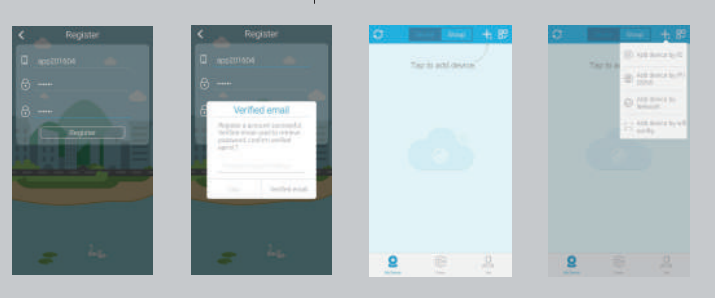
Notes:

1. Device will not in guarantee if caused by below reason:
A.Accident;negligence;disaster;mis-operation.
B. Do not conform to the environment and conditions,such as power improper, working temperature too high or too low, lightning stroke.ect.
C.Ever be maintained by other center which not belong to the real factory.
D.Goods already sold more than 12 months.



9 Esee mobile application (IP PRO)-Add device

Step 1: Register
Step 2: Enter device interface
Step 3: Add device
Step 4: Added successfully. Click channel No.to get video
Step 5: Remote playback



APP download scan here

