

instructions

Catalogue

A, wireless upgrade.

B, Easy Connection configuration

C, point-to-point direct connected video functions

a: PC

b: the Android client

D, network remote video functions

a: the Android client

b: the IOS side

c: PC

E, Much screen in the Intranet function

One, the wireless firmware update

1, default Settings

Power supply voltage : DC 5V

The power supply current: 300~500mA

The LED light: blue light on after electric start, half a minute later start flashing, prove that start is normal, can be used

The default wireless parameters:

SSID: LNW-UFORKM_XXXXXX (XXXXXX for MAC after six)

Connect the password: 888888888 The default 888888888

DHCP IP: 10.10.10.*

Gateway: 10.10.10.254

The HTTP configuration: http://10.10.10.254

User name: admin

The password: admin

After the success of the login, enter the Web page.

2, the wireless update the page

To ensure the connection LNW-UFORKM module successfully, Then log in HTTP administration interface, As shown in figure 1: Click on the Administration--->Upload Firmware--->browse

Choose to burn the Image file, then Apply. Appears in figure 2, Please wait one minute, Results will appear as shown in figure 3, mean the upgraded was successful, If you don't get "Done" and etc words, You need to return to factory, upgrade by way of cable maintenance.

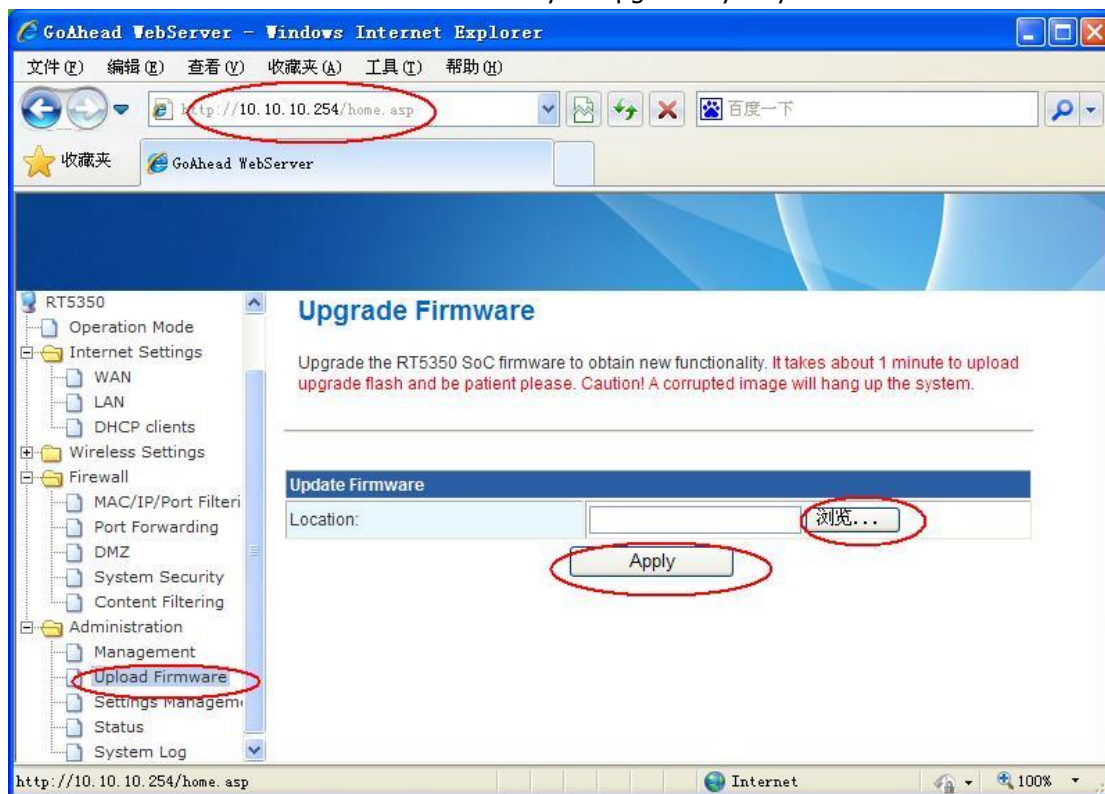


Figure 1

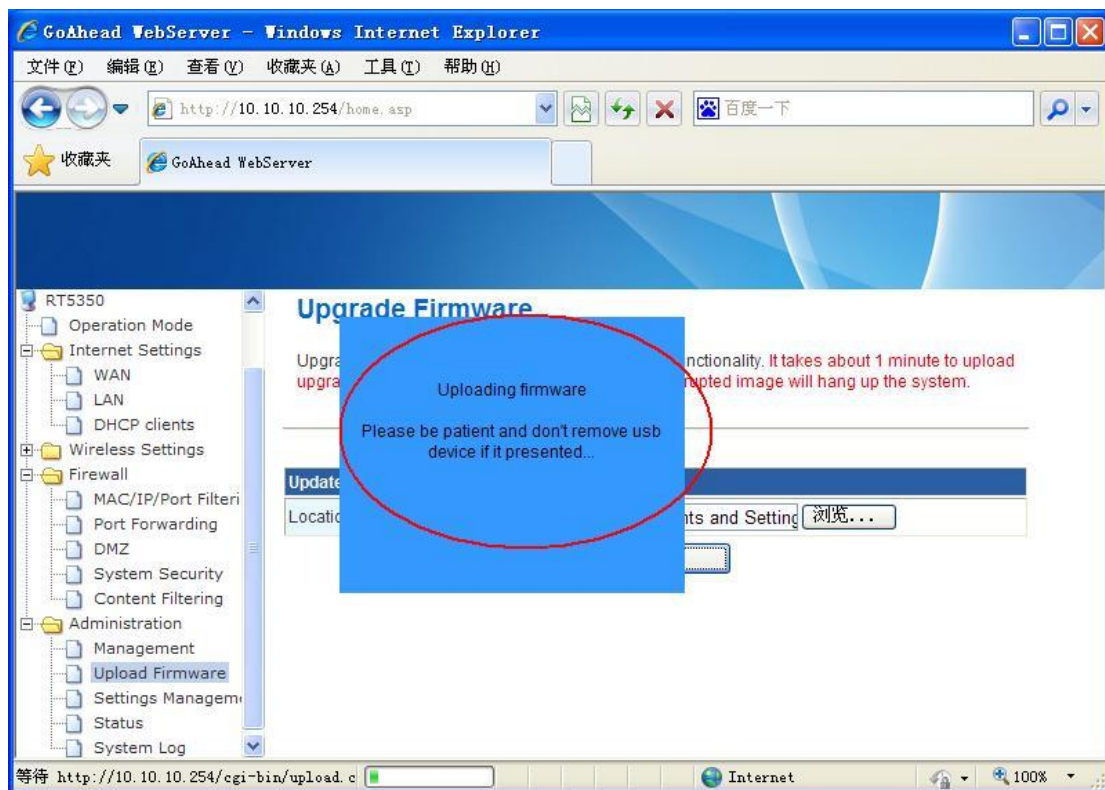


Figure 2

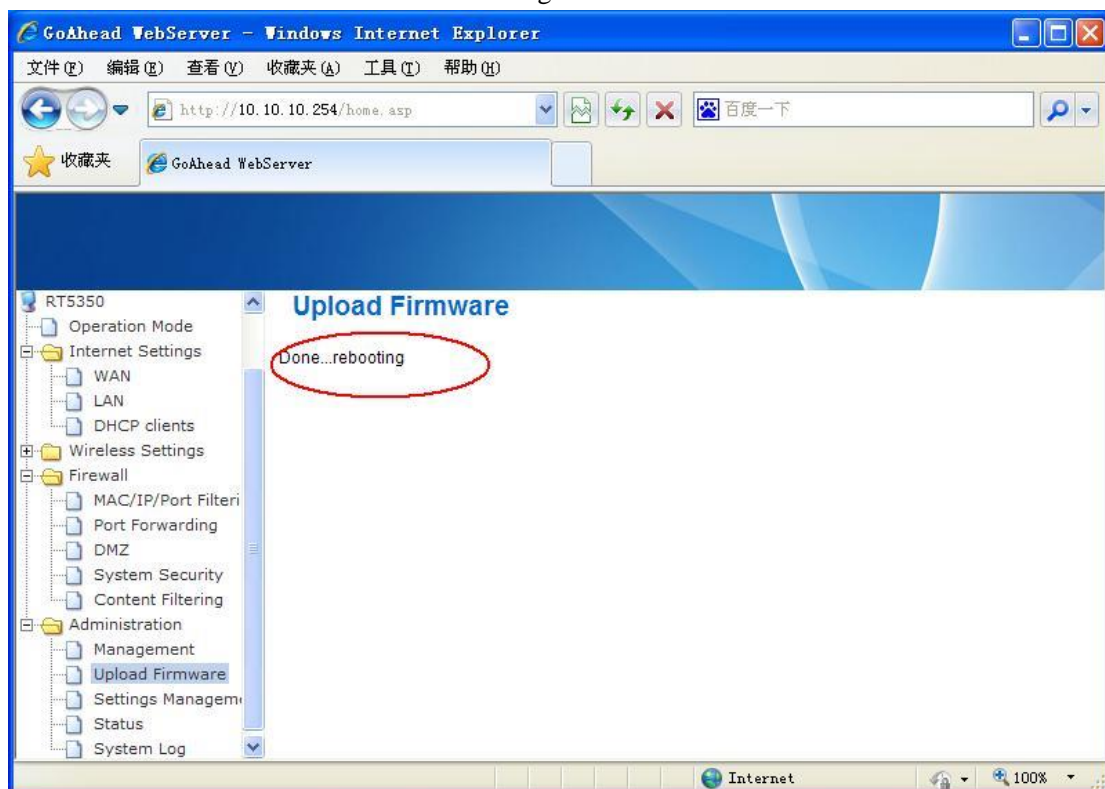


Figure 3

Two, LNW-UFORKM Easy Connection configuration

To realize the network remote cloud function, need the LNW-UFORKM module configured to AP client mode and do Easy Connection Settings.

First login Web Page ,Type the address bar: http://10.10.10.254

Then enter the configuration items: Currently LNW-UFORKM + 2269 factory default configuration for the AP Client mode, So don't need to configuration item in Operation Mode, Only need the "Wireless Setting - AP - Client" configuration.

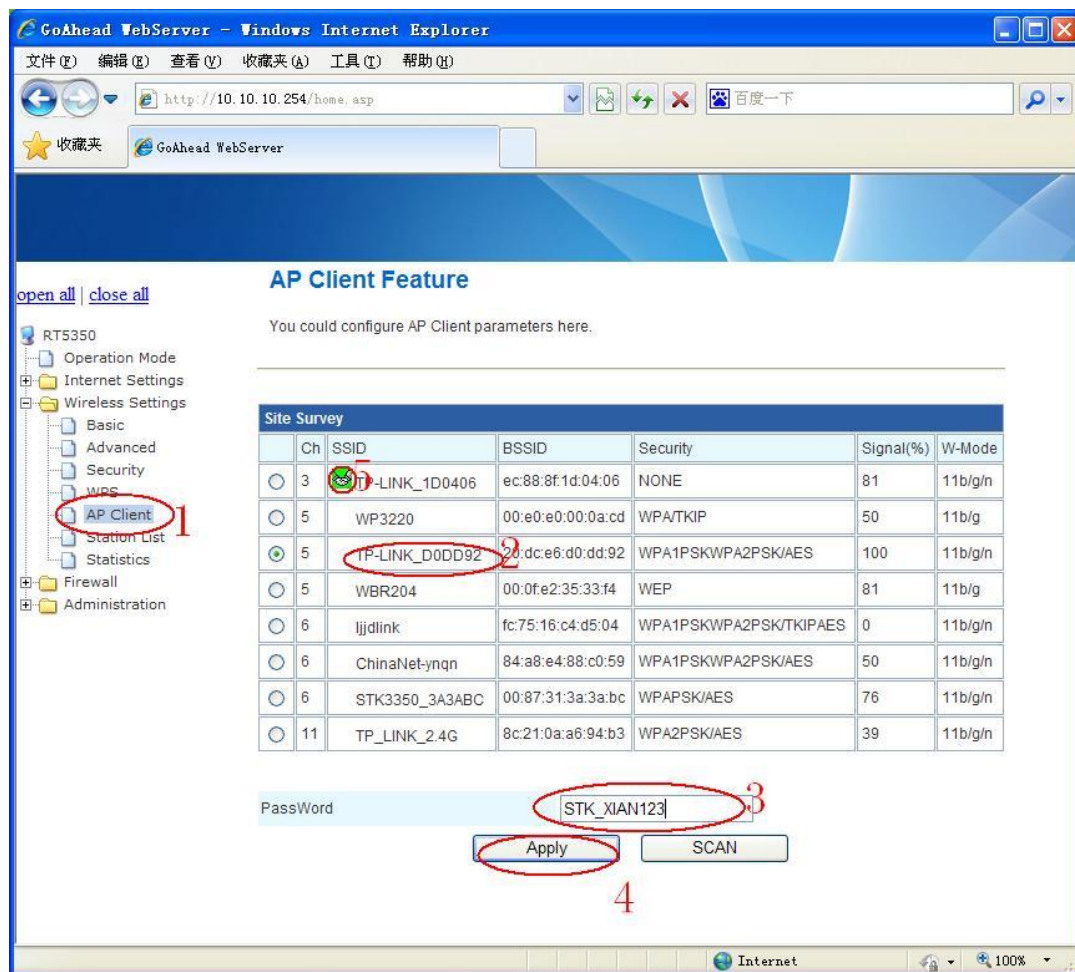


Figure 4

- Figure 4 shows:
- 1, Enter the AP Client
 - 2, Select the wireless router to connect. For example: we have chosen SSID for TP - LINK_D0DD92 wireless router.
 - 3, Enter the wireless router's wireless connection password.
 - 4, Click Apply

The above Settings completed, The router configuration, Wireless connections will be disconnected, Wait to reconnect, Check Settings (figure 5) If the connection is successful, can appear a little green icon (figure 5), If not success, please make sure the wireless encryption password if entered correctly.

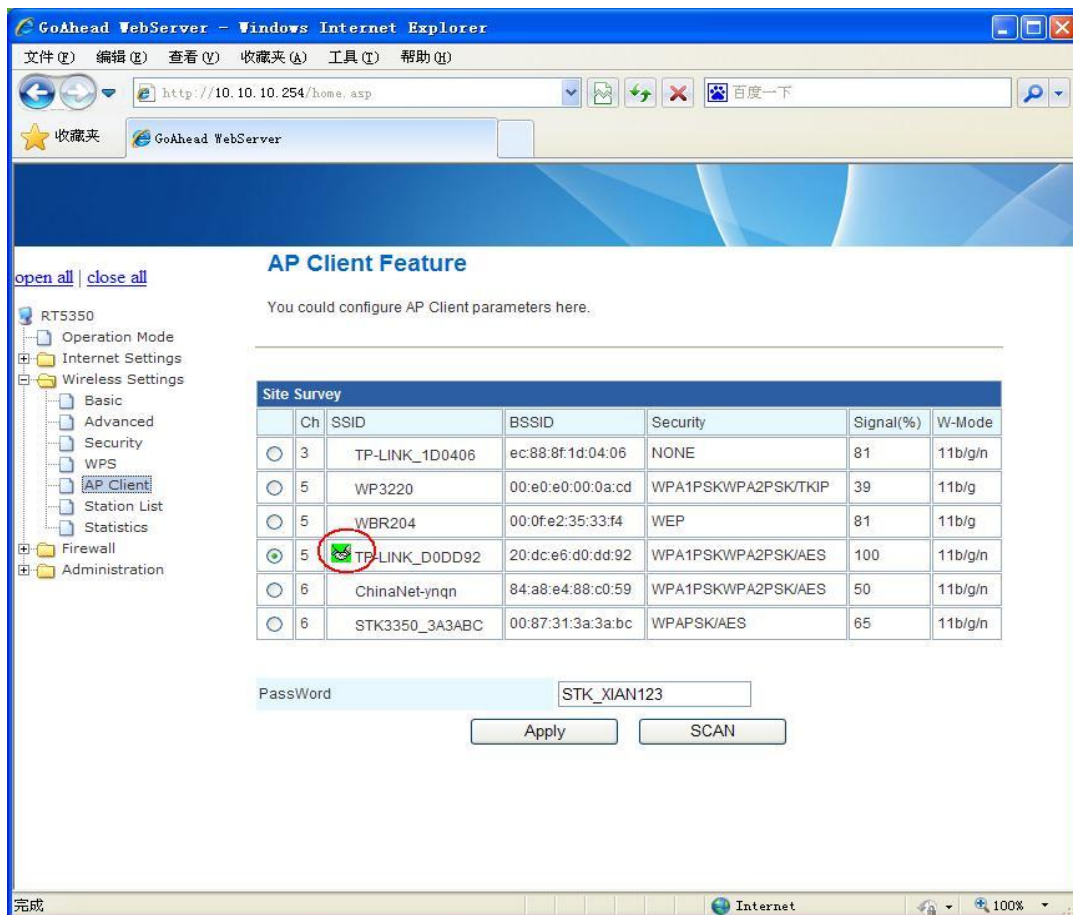


Figure 5

Can also be through a web connection status page, Check the Easy Connection if configured successfully. In figure 6 The Internet WAN IP ADDRESS item in the Configuration, have IP address that shows, means Easy Connection Connection is successful.

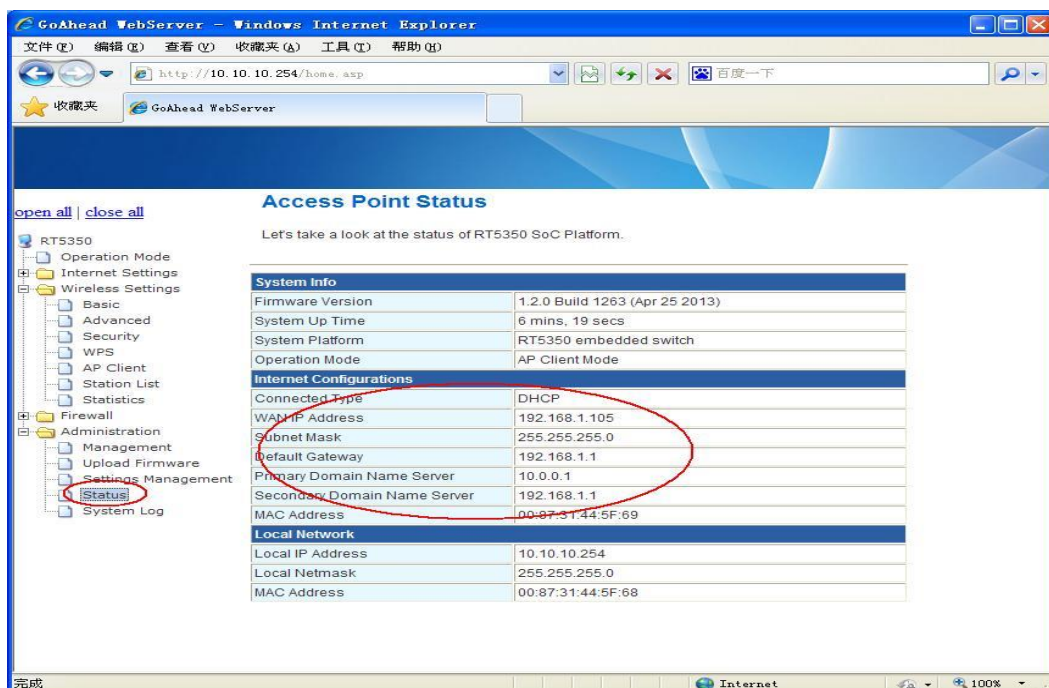


Figure 6

Three, point-to-point video functions

First, you need to open the computer (mobile phone) of the WLAN function, And connect to LNW-UFORKM module, The default wireless connection password: 888888888.

1, PC end point to point application.

Run STK PC Client webcam Client. Exe, can appear in figure 7,

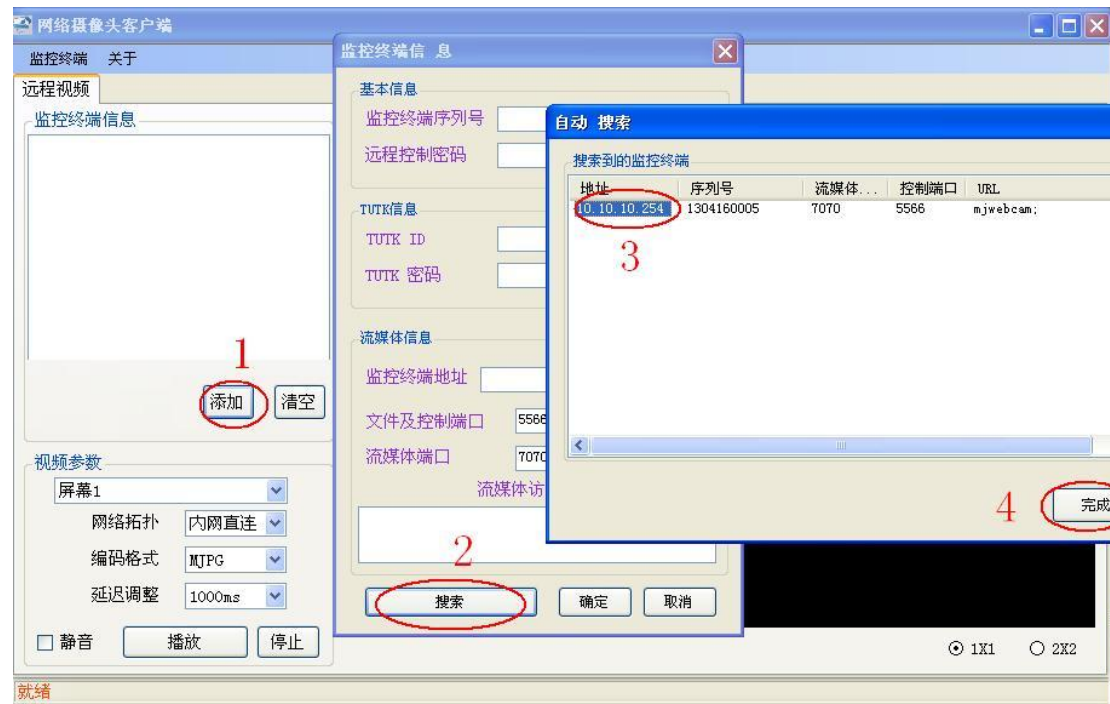


图 7

In turn, to click

- 1 Add,
- 2 Search,
- 3 Click on the address
- 4 Complete.

All completed appear as figure 8



Figure 8

1, Enter the remote control password, the default admin.

2, confirm.

Completed appear as figure 9:

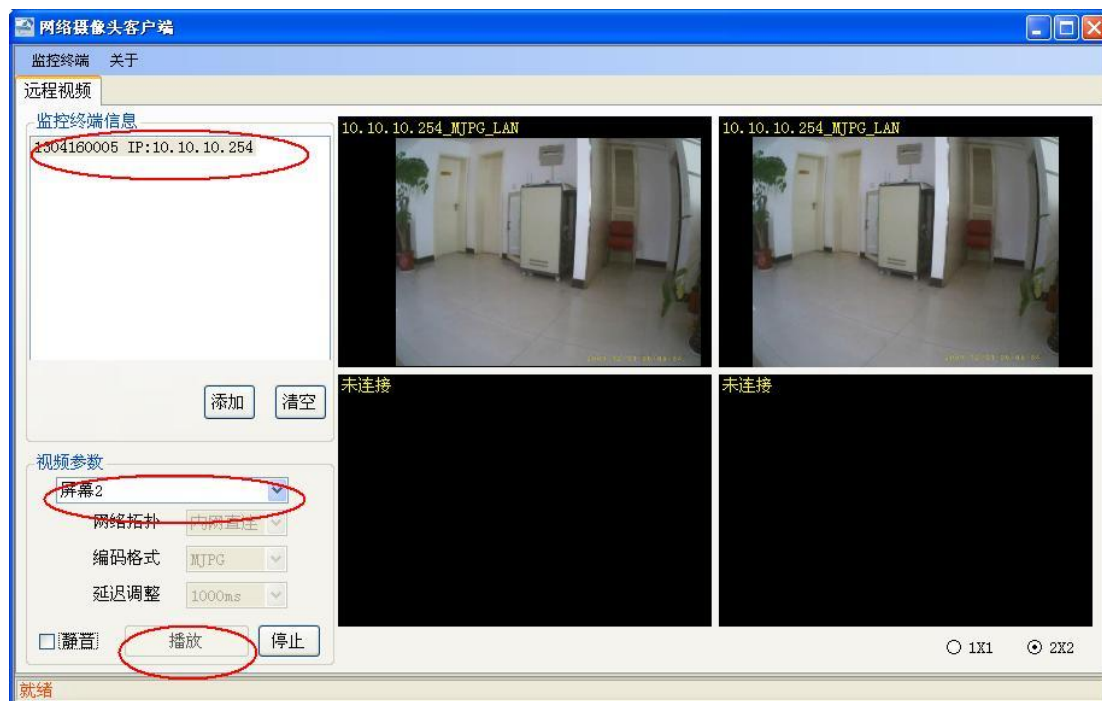


Figure 9

Select monitoring terminal, The screen position, We have up to 4 images, Network topology item choose network directly connected, And then play, Can see the picture. If the right mouse button click IP, Will pop up as shown in figure 10 remote files, The remote control Configuration

of the three options.

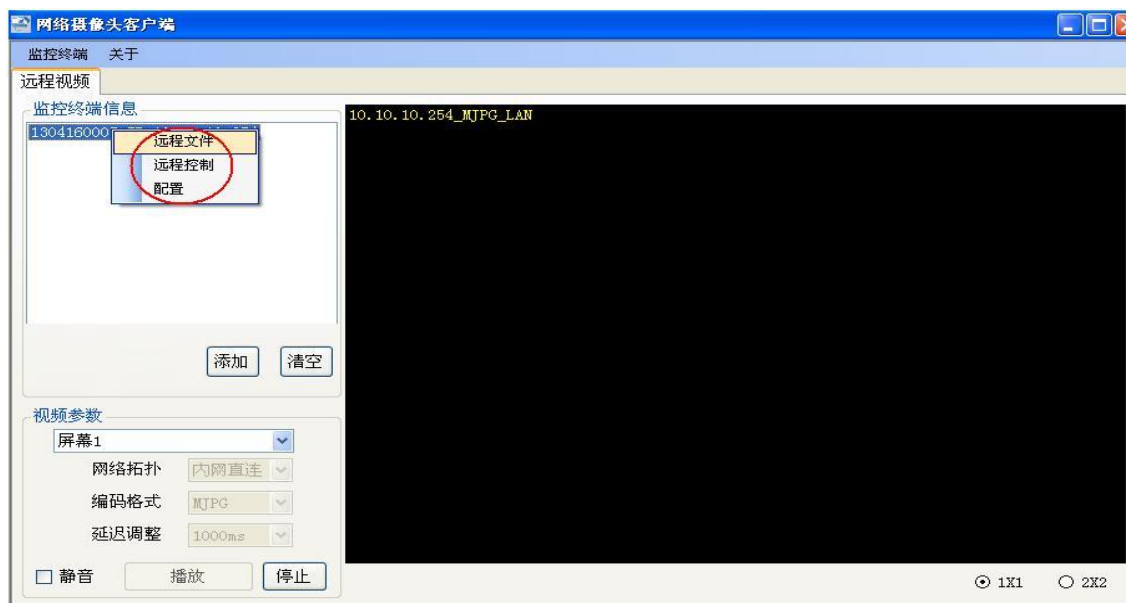


Figure 10

Click on the remote file, Will check the SD card to store data files. Preview and download, etc. (figure 11)

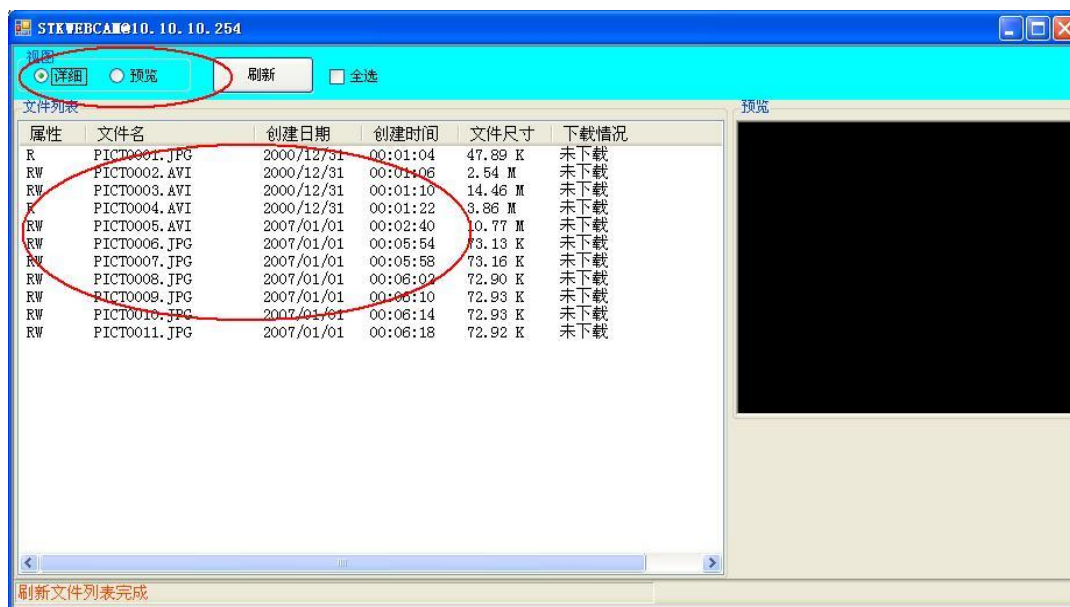


Figure 11

If you click on the remote control, can appear as figure 12.



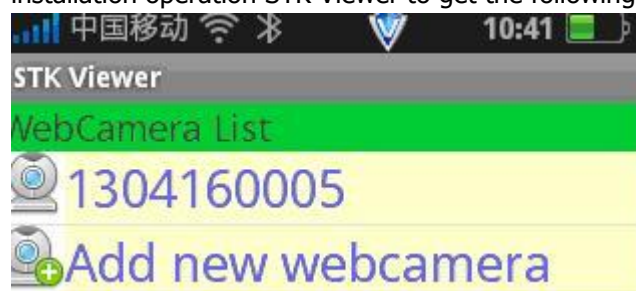
Figure 12

Figure shows: total have 11 set items, can according to need to remote control devices.

2. Android end point to point application

With mobile WIFI connection LNW-UFORKM equipment first.

Then download and install the RtspActivity apk, Can through Bluetooth, WIFI, Mail, etc ways, copy the package to the mobile phones, To perform the installation, After the success of the installation operation STK Viewer to get the following interface.



Choose the Add new web camera, Pop up the below picture.

IP Cam Setting

Search

LAN options

SerialNo 0000000000

Ip Addr 10.10.10.254

CMD Port 5566

Video Port 7070

PassWord admin

Stream Support

☒ H264 ☒ MJPG

OK Cancel

Click Search, OK。

Click the add camera , Select MJPG, Can see the image。

STK Viewer

WebCamera List

1304160005

0000000000

Add new webcamera

Select Media

H264

MJPG

Four, network remote video functions

To realize the network function , please ensure that:

1. LNW-UFORKM module Settings for AP client mode and the Easy Connection connect to the Internet.
2. Remote viewing end (PC or mobile phone) is connected to the Internet.
3. LNW-UFORKM TUTK code connected built-in support for the network

A: The Android client

Log in to Google play P2PCamlive software download installation , Running software will appear figure 15:



Figure 15

Select add camera, then shows as the right of figure 15,

- 1 UID 20 TUTK UID, scanning or manual input the QR code.
- 2 The default password: 888888
- 3 Confirmed.

Then you can see the screen (figure 16).



Figure 16

B: The IOS side

APP store Download P2PCamlive software,Running the software will be as shown in figure 17.



Figure 17

Click new add, as shown in figure 18, Please input TUTK UID and password (default 888888). Then click on the icon to see the screen shown in figure 18:



Figure 18

C:PC side

If LNW-UFORKM + 2269 have TUTK function, then STK equipment can outer net connection. First run the webcam Client. Exe, As shown in figure 19, With steps, first, to add, and then please input monitor serial number, The remote password: admin; TUTK ID: Manually input, or scan, TUTK password: The default is: 888888; Monitor terminal address is: 10.10.10.254. Set up, click on the play can see the image.

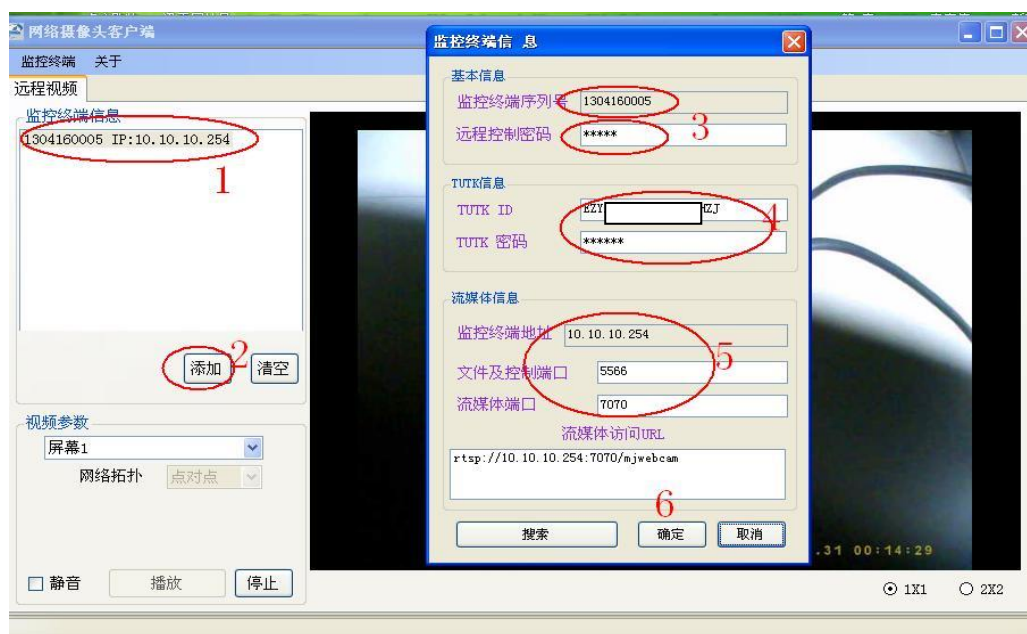


Figure 19

Five, much screen in the Intranet function

In order to realize network more screen features to ensure that:

- 1, LNW-UFORKM module Settings for AP client mode and Easy Connection to connect to the same wireless router.
- 2, Remote viewing end (PC or cell phone) is also connected to the wireless router

PC side application

First open the webcam Client, Click on the search, At this time will see multiple terminals, As shown in figure 20, in turn to add is ok .



Figure 20

Display effect as shown in figure 21.

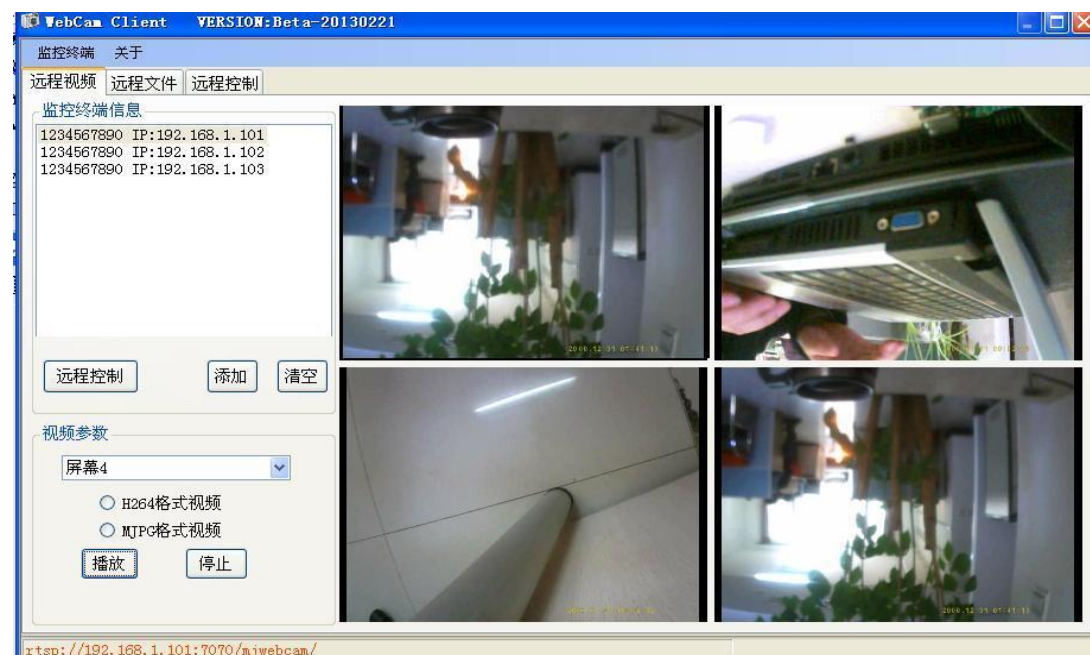


Figure 21